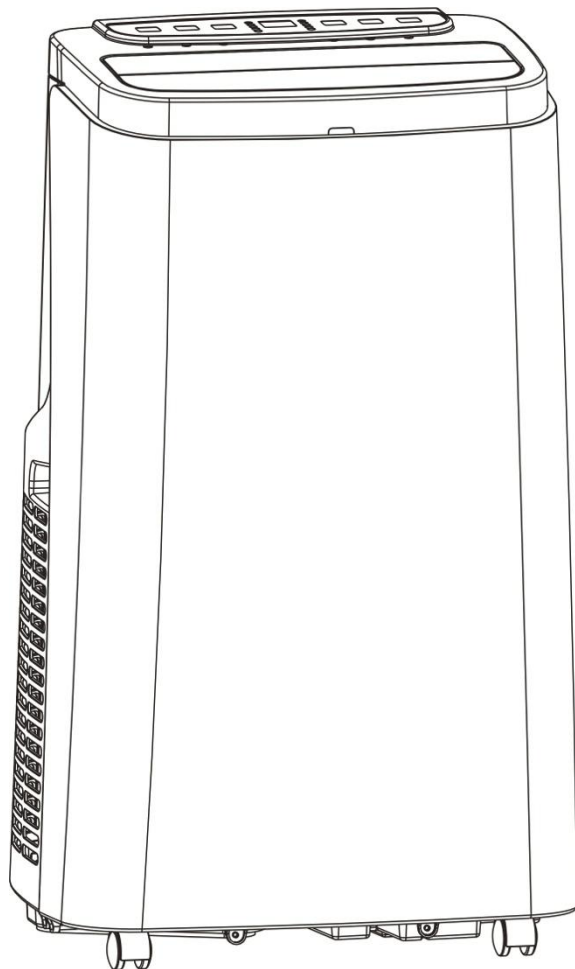




**SILENT 12 / 16  
PORTABLE AIR CONDITIONER  
USER MANUAL**



**Thank you for choosing ElectriQ  
Please read this user manual before using this innovative Air Conditioner and keep it  
safe for future reference.  
Visit our page [www.electriQ.co.uk](http://www.electriQ.co.uk) for our entire range of Intelligent Electricals**



<b>SAFETY INSTRUCTIONS</b>	<b>3</b>
<b>FEATURES AND PARTS LIST</b>	<b>4</b>
<b>INSTALLATION</b>	<b>5</b>
<b>OPERATION AND SETTINGS</b>	<b>7</b>
<b>WATER-DRAINAGE</b>	<b>9</b>
<b>MAINTENANCE</b>	<b>10</b>
<b>TROUBLESHOOTING</b>	<b>11</b>
<b>APPENDIX</b>	<b>12</b>
<b>TECHNICAL DATA</b>	<b>12</b>

# SAFETY INSTRUCTIONS

## Important!

- Carefully read the instructions before operating the unit
- This appliance is for indoor use only.
- Rating: This unit must be only connected to a 220-240 V / 50 Hz earthed outlet.
- Installation must be in accordance with regulations of the country where the unit is used.
- If you are in any doubt about the suitability of your electrical supply have it checked and, if necessary, modified by a qualified electrician.
- This air conditioner has been tested and is safe to use. However, as with any electrical appliances - use it with care.
- Disconnect the power plug from socket before dismantling, assembling or cleaning.
- Avoid touching any moving parts of the appliance.
- Never insert fingers, pencils or any other objects though the guard
- This appliance is not intended for use by persons (including children) with reduced physical, sensory or mental capabilities. It is also not intended for use by those with a lack of experience and knowledge, unless they have been given supervision or instruction concerning the use of the appliance by a person responsible for their safety.  
Do not leave children unsupervised with this appliance.
- Do not clean the unit by spraying it or immersing it in water.
- Never connect the unit to an electrical outlet using an extension cord. If an outlet is not available, one should be installed by a qualified electrician.
- Never operate this appliance if the cord or plug is damaged. Ensure the power cord is not stretched or exposed to sharp object/edges.
- A damaged supply cord should be replaced by the manufacturer or a qualified electrician in order to avoid a hazard.
- Any service other than regular cleaning or filter replacement should be performed by an authorized service representative. Failure to comply could result in a voided warranty.
- Do not use the appliance for any other purposes than its intended use.
- **The air conditioner unit must always be stored and transported upright, otherwise irreparable damage may be caused to the compressor; if in doubt we suggest waiting at least 24 hours before starting the unit.**
- Avoid restarting the air conditioning unit unless 3 minutes have passed since being turned off. This prevents damage to the compressor.
- Never use the mains plug as a switch to start and turn off the air conditioning unit. Use the provided ON/OFF switch located on the control panel.
- Always place the unit on a dry and stable surface.
- The appliance should not be installed in laundry or wet rooms

## Energy Saving and Unit Safety Protection Tips

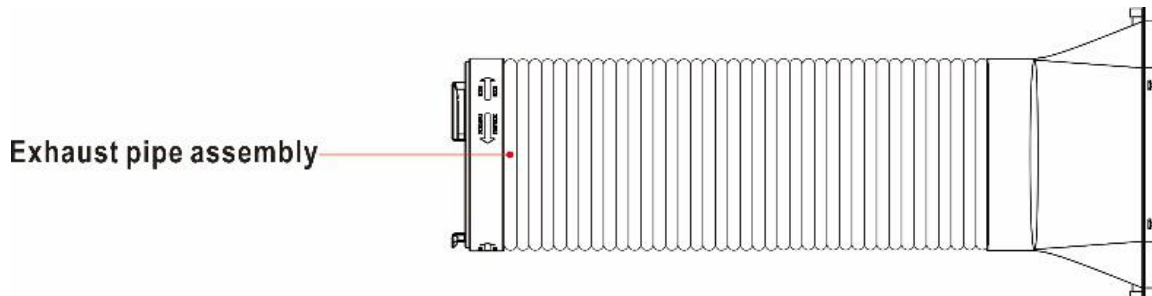
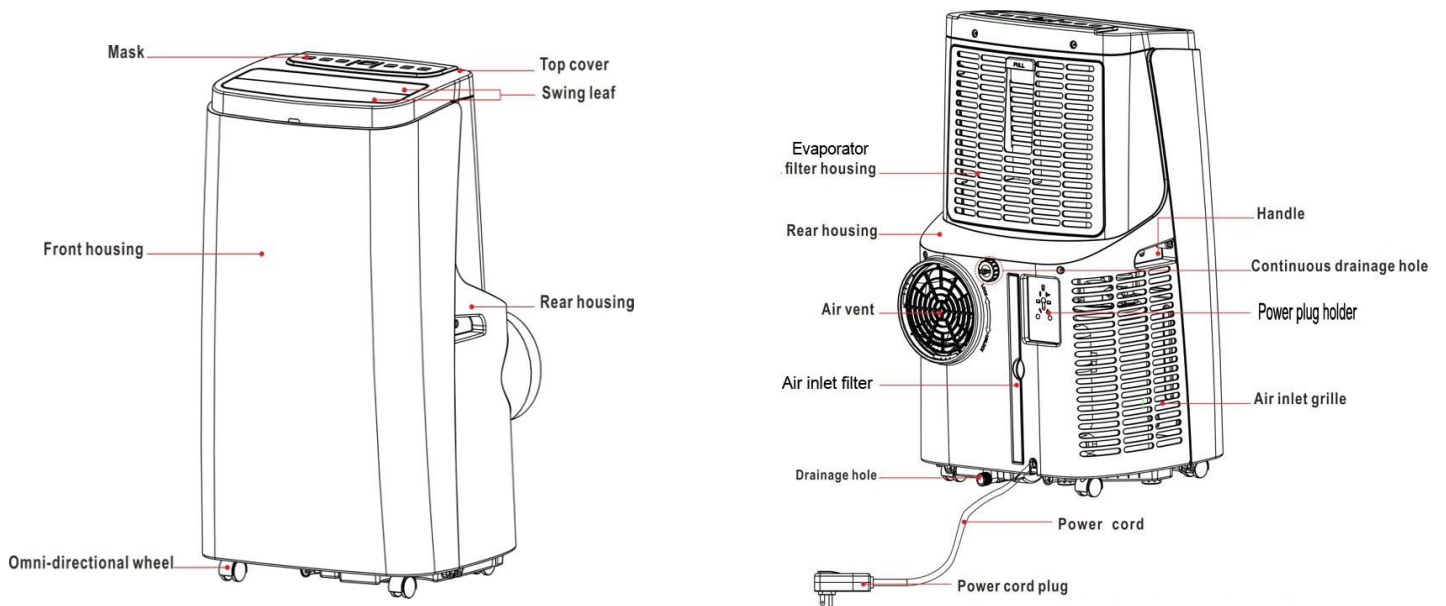
- Do not cover or restrict the airflow from the outlet or inlet grills.
- For maximum performance the minimum distance from a wall or objects should be 50cm.
- Keep the filters clean. Under normal conditions, filters should only need cleaning once every three weeks (approximately). Since the filters remove airborne particles, more frequent cleaning maybe necessary, depending on the air quality.
- For the initial startup set the fan speed to maximum and the thermostat to 4-5 degrees lower than the current temperature. After, set the fan switch to low and set the thermostat to your desired setting.
- To protect the unit we recommend not using the cooling function when the ambient temperature is higher than 35°C.

# FEATURES AND PARTS LIST

## 1. Features

- Self-evaporative system - no external water tank needed
- Designer inspired luxury model
- LED screen, indicates temperature and operation mode
- On/Off timer function – allows you to choose when the unit operates
- Compressor protection technology

## 2. Parts list:



# INSTALLATION

## Installation:

Warning: Before using this unit, please keep it upright for at least 3-4 hours.

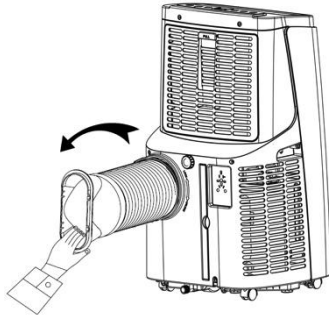
This unit can easily be moved from one room to another.

While moving the unit please note that it must always be kept upright and then placed on an even surface.

1. Assemble the fishtail connector on to the hose.



2. Assemble the exhaust hose to the air conditioner body.



Extend one head of the hose and screw it into the unit anti-clockwise. The hose can be removed by screwing the hose clockwise. Note: to screw it into place should take no less than three rotations.

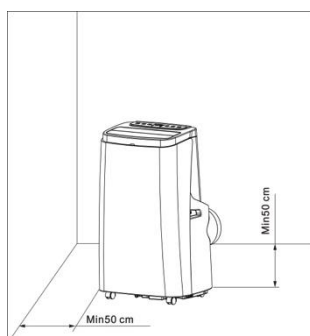
3. In the same way connect the hose to the assembled adaptor (at least three rotations).

4. Installation of window kits.

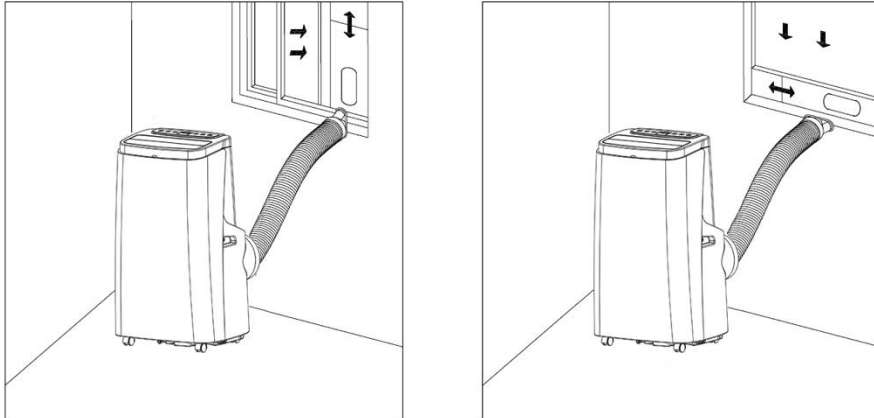
Partially open the window and then fix the window kit to the window.



5. Make sure the unit is upright and there are no obstructions to the air inlets and outlet grills.



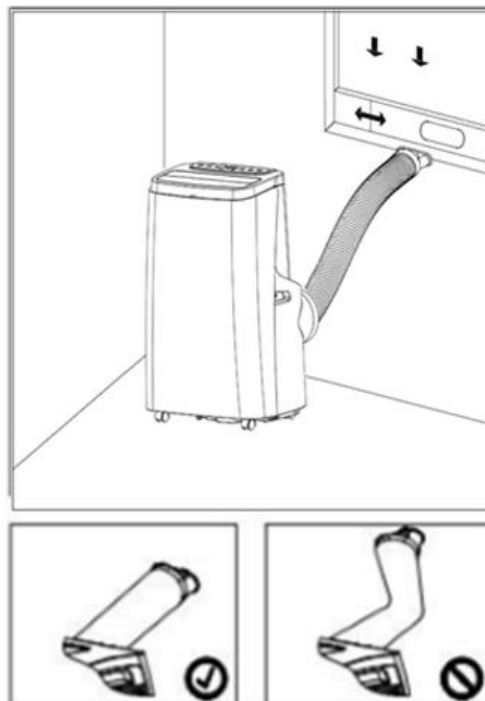
6. Fix the other end of the hose to the air-outlet window kit.



**Note:** The window kit is only designed to be installed with sliding or sash windows or doors. The window kit is not designed or to be used with any other style of windows. However, the fish tail adaptor can be used with most windows / doors. When using the cooling mode ensure that the opening left is as small as possible. The best form of installation is through a wall duct. By properly venting, you expel hot air from your room while efficiently cooling it.

#### Important safeguards

The length of the soft hose extends from 28 cm to 150 cm. If hose is extended above this length the unit may malfunction and this can invalidate the warranty. The outlet vent must be well ventilated and not obstructed as this will cause the unit to overheat. Avoid bending the air hose more than 30 degrees

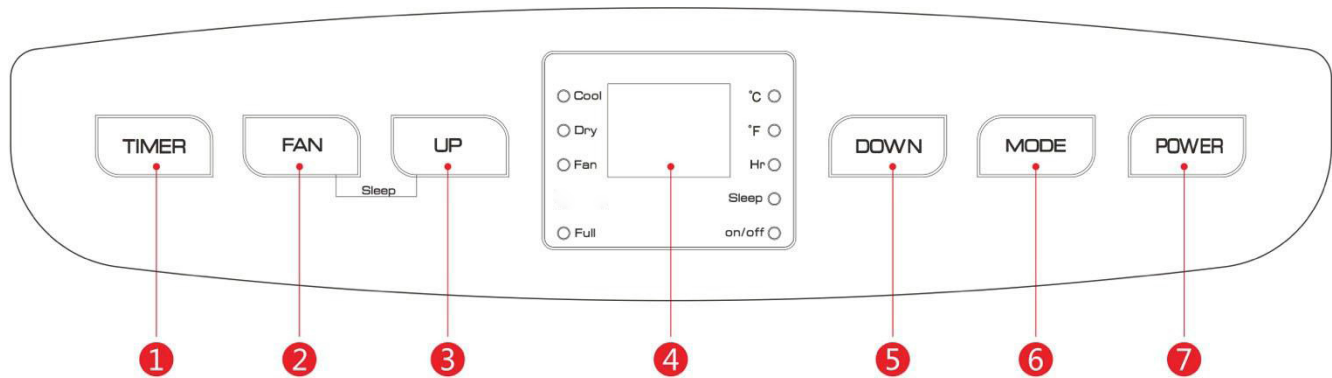


# OPERATION AND SETTINGS

This portable air conditioner boasts 3 functions: cooling, dehumidifying and fan. The fan has two speeds: high and low. Temperature range settings are: 16-31°C. The unit will also display operating function, temperature, fault diagnostic and protective functions on the LCD screen.

## 1. Control instruction

### Control panel



① Timing Key

② Fan Speed Selection Key

③ Up Key

④ Display window

⑤ Down key

⑥ Mode selection key

⑦ Power key

When plugged in the unit is automatically in standby status.

**'POWER' button (7)** press the key to turn on and turn off the machine. In the case of power on, press the key to turn off the machine; in the case of power off, press the key to turn on the machine.

**'MODE' button (6)** In the case of power on, press the key to choose cooling, fan, dehumidification mode.

**'UP' (3) and 'DOWN' (5) button:** set temperature and timer.

In cooling mode, the temperature can range from 16 – 31°C. Timer is 1-24 hrs.

Pressing **UP** and **DOWN** buttons simultaneously, shifts between °C and °F.



#### **'FAN' button (2)**

- In cooling and fan mode, press the key to select high, medium or low speed operation.
- In dehumidification mode, the fan key does not operate, and the fan will default to low speed operation.

#### **'TIMER' button (1):**

Press the button to select your desired operating times.










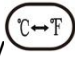

Use the  and  buttons to adjust hours from 1-24. You can only set the auto-shut off timer while the unit is operating (on) You can only set the auto-start timer while the unit is switched off (standby) After you have set the timer the timer will initiate and the units will start/ stop after the selected time. If you adjust the timer or press the power key previous settings will be cleared. Timer functions cannot be combined or repeated.

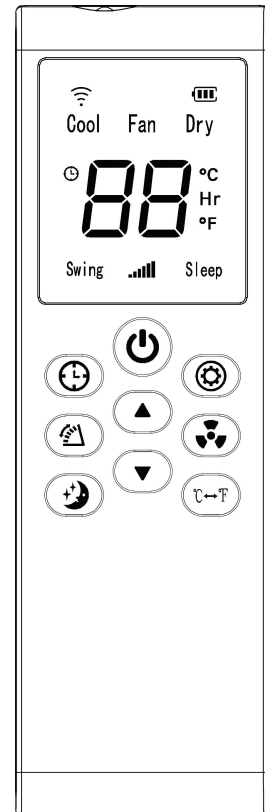
**Sleep Mode:**

In the cooling Mode, Press the “UP” and “FAN” buttons together to turn on the sleep mode, then the unit will work on Energy-Saving and lowest fan mode.

**Note:** The sleep mode is not operational in dehumidifying or Fan mode. Please use the remote control to set the sleep mode, it cannot be set from the air con touch control panel.

**2. Operating Instructions of the Remote Control**

- 2.1 Power: Press the  key to turn on or off the machine.
- 2.2 Mode: press the  key to switch between cooling, fan, dehumidification and heating mode (optional).
- 2.3 Up: press the  key to increase temperature and timer set value.
- 2.4 Down: press the  key to reduce temperature and timer set value
- 2.5 Fan: press the  key to cycle between high, medium and low fan speed.
- 2.6 Timer: press the  key to set timer value.
- 2.7 Swing: Press  the key to open or close swing style. Air flow of the air outlet can blow at different angles.
- 2.8 Press the key  to switch between Celsius and Fahrenheit.
- 2.9 Sleep Mode: Press the  key to turn on the sleep mode.



**3. Multi protective function**

**3.1. Frost Protection Function:**

In cooling, dehumidification or economic power saving mode, if the temperature of the exhaust pipe is too low, the machine will automatically enter protection status; if the temperature of the exhaust pipe rises to a certain temperature, it can automatically revert to normal operation.

**3.2. Overflow Protection Function:**

When water in the water pan exceeds the warning level, the machine will automatically sound an alarm, and the LDC temperature display area will show "FL". At this point, you need to move the drainage pipe connecting the machine or the water outlet to sewer or other drainage area to empty the water (details see *Drainage Instructions* at the end of this chapter). After the water is emptied, the machine will automatically return to the original state.

**3.3. Automatic Defrosting (heating and cooling models have this function):**

The machine has automatic defrosting function: during defrosting, heating symbol on the display screen will flash.

### 3.4. Automatic Thermal Protection:

To protect the service life of the machine, the machine has automatic thermal protection in heating mode. During the protection period, the compressor and the lower motor will stop operation and will automatically return to normal heating state after the temperature of the machine recovers.

### 3.5. Protection Function of the Compressor

To increase the service life of the compressor, it has a 3-minute delay booting protection function after the compressor is turned off.

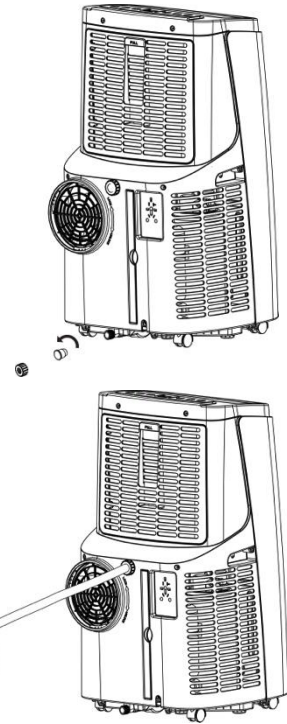
## WATER-DRAINAGE

### 1. Manual drainage:

- 1.1 When the internal water tank is full the unit will stop working.
- 1.2 Shut off the unit and unplug. Try not to move the model abruptly as this may cause water to spill out from internal water tank.
- 1.3 Place a tray under the water plug.
- 1.4 Screw off the drain plug and unplug the water rubber stopper - water will drain from the container.
- 1.5 Put the water rubber stopper back and screw the drain
- 1.6 Plug cap back into place

### 2. Continuous drainage:

- 2.1 Screw off the drain plug cap and unplug the water rubber stopper.
- 2.2 Use a water pipe to connect to the water outlet.
- 2.3 You can plumb this pipe into your current plumbing system, lead it outside or use a water pump.



**Note:** This model has a self-evaporative function, which reduces the need to empty the water tank.

If the unit is vented correctly most of the water is reused to cool the condenser coils and any excess is evaporated. Please do not use continuous drainage if you intend to use the self-evaporating facility.

# Maintenance

## 1. Cleaning:

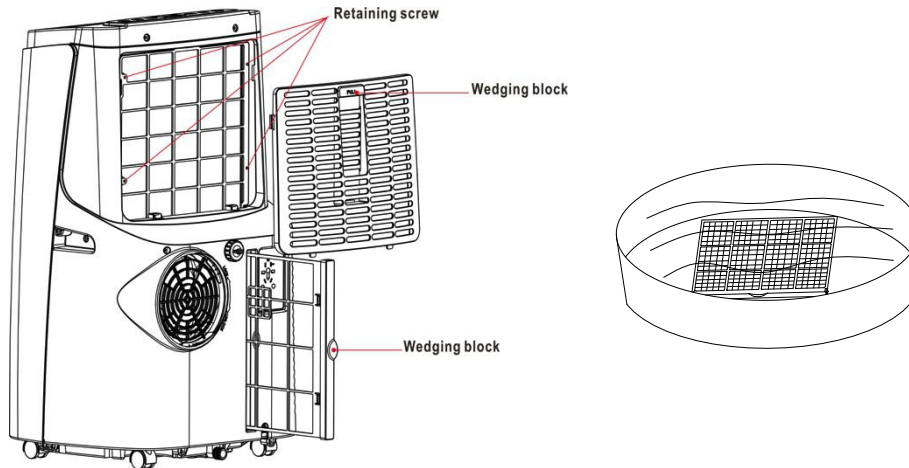
Before cleaning and maintenance, turn off the machine and unplug the plug.

### Clean the surface

Clean surface of machine with a wet soft cloth. Don't use chemicals, such as benzene, alcohol, gasoline, etc.; otherwise, the surface of the air conditioning will be damaged or even the whole machine will be damaged.

### Air filter cleaning

If the filter screen is clogged with dust, and the effectiveness of the air conditioning is reduced, be sure to clean the filter screen once every two weeks.



#### A: Clean the upper filter screen frame

a: Clasp the wedging block of the Evaporator filter screen frame with hands. Force down from the outside to remove the Evaporator filter screen frame. Unscrew four screws fixing the Evaporator filter screen and the rear housing to remove the Evaporator filter screen (as shown in the above figure) .

b: Put the Evaporator filter screen into warm water with neutral detergent (about 40 °C /104°F) and dry it in the shade after rinsing clean.

#### B: Clean the lower filter screen frame

a: Hold the handle of the air inlet filter screen frame, and pull it outward gently to remove it.

b: Put the air inlet filter screen into warm water with neutral detergent (about 40°C / 104 °F) and dry it in the shade after rinsing clean.

## 2. End of Season Maintenance:

1. Pull out the plug from the drainage hole and empty the internal tank. You can also drain the water by leaning the unit.
2. Then switch the unit to low fan mode.
3. Keep the unit in this mode for half day - until the conduit is dried. Doing this helps to keep the inside of the unit dry and prevents mould developing
4. Turn off the unit and pull out the plug.
5. Coil the wire and bind it together, then put it into the accessories space.
6. Separate the air-exhaust pipe and store it safely.

7. Cover the unit and keep it in a dry place.
  8. Take the batteries out of remote control and store or dispose, them safely
- Keep all accessories with the unit ready for next season.

## Troubleshooting

**Do not repair or disassemble the air conditioning by yourself. Unqualified repair will lead to failure of the warranty card, and may cause damage to users or their properties.**

Problems	Reasons	Solutions
The air conditioning does not work.	There is no electricity.	Turn it on after connecting it to a socket with electricity.
	The overflow indicator displays "FL".	Discharge the water inside.
	The ambient temperature is too low or too high	Recommend to use the machine in at the temperature of 7-35°C(44-95°F).
	In cooling mode, the room temperature is lower than the set temperature; in heating mode, the room temperature is higher than the set temperature.	Change the set temperature.
	In dehumidification mode, the ambient temperature is low.	The machine is placed in a room with an ambient temperature of greater than 17 °C. (62 °F).
The cooling or heating effect is not good	There is direct sunlight.	Pull the Curtain.
	Doors or windows are open; there are a lot of people; or in cooling mode, there are other sources of heat.	Close doors and windows, and add new air conditioning.
	The filter screen is dirty.	Clean or replace the filter screen.
	The air inlet or outlet is blocked.	Clear obstructions.
Big Noise	The air conditioning is not placed on a flat surface.	Put the air conditioning on a flat and hard place (to reduce noise).
compressor does not work.	Overheat protection starts.	Wait for 3 minutes until the temperature is lowered, and then restart the machine.
The remote control does not work.	The distance between the machine and the remote control is too far.	Let the remote control get close to the air conditioning, and make sure that the remote control directly faces to the direction of the remote-control receiver.
	The remote control is not aligned with the direction of the remote control receiver.	
	Batteries are dead.	Replace batteries.
Displays 'E1'.	The pipe temperature sensor is abnormal.	Check the pipe temperature sensor and related circuitry.
Displays 'E2'	The room temperature sensor is abnormal.	Check the room temperature sensor and related circuitry.

If problems not listed in the table occur or recommended solutions do not work, please contact the professional service organization.

## APPENDIX



Disposal: Do not dispose this product as unsorted municipal waste. Collection of such waste must be handled separately as special treatment is necessary. Recycling facilities are now available for all customers at which you can deposit your old electrical products. Customers will be able to take any old electrical equipment to participating civic amenity sites run by their local councils. Please remember that this equipment will be further handled during the recycling process, so please be considerate when depositing your equipment. Please contact the local council for details of your local household waste recycling centers.

### TECHNICAL DATA

	SILENT 12	SILENT 16
Capacity	3.52 KWh / 12,000 BTU	6.69 KWh / 16,000 BTU
Rated Input	1.34 KW	1.70 KW
Running Current	6A	6A
Air Flow	400 m <sup>3</sup> /h	400 m <sup>3</sup> /h
EER Rate	A	
Compressor	Rotary, R410A gas	
Noise	38-48 dB(A) Sound Energy <65dB(A) Sound Power	
Thermostat	16-31 °C	
Moisture Removal	26.4 L	40
Permitted Excessive	0.8 / 3.2 MPa	
Maximum Allowable Pressure	1.0 / 5.0 MPa	
Power Supply	220-240V/50 Hz	
Net Weight	28 KG	30 KG
Dimension(L*D*H)	420*360*722 mm	
Unit must be vented outside when in Air Cooling and Heating mode. For the purposes of EU regulation EN12102 this is a local air conditioner and produces less than 65dB(A) sound energy.		

**ElectriQ UK SUPPORT**  
**[www.ElectriQ.co.uk/support](http://www.ElectriQ.co.uk/support)**

**Please, for your own convenience, make these simple checks before calling the service line. If the unit still fails to operate call: 0871 620 1057 or complete the online form**

- 1. Has the unit been standing upright for at least 2 hours?**
- 2. Is the unit plugged into the mains? Is the fuse OK?**
- 3. Switch the unit off and wait three minutes to see if the issue is resolved.**
- 4. Check whether the water tank is full.**

**[www.ElectriQ.co.uk](http://www.ElectriQ.co.uk)  
Unit 2, The Nursery  
Berristow Lane  
South Normanton  
Derbyshire, DE55 2FX**

**Office hours: 9AM - 5PM Monday to Friday**



